

MOANALUA ELEMENTARY
Orchestra Program with Mr. Hamano Fall 2022

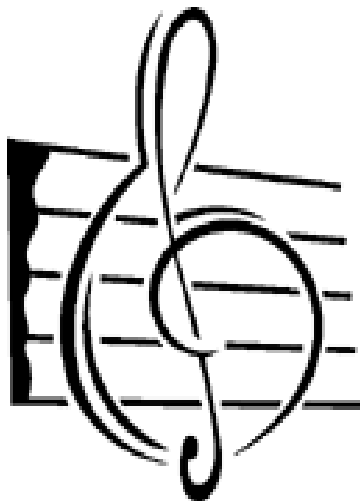
After School Enrichment
In the Music Room F1
Violin/Viola/Cello/Bass

Beginning Orchestra I: Fall Session*

Days: Tuesday/Thursday → Grades 4-6
Time: 3:00pm-3:55pm
(August 23rd – December 15th)
*No previous experience or audition
required

Beginning Orchestra II: Fall Session*

Days: Tuesday/Thursday → Grades 4-6
Time: 4:00pm-4:55pm
(August 23rd – December 15th)
*No previous experience or audition required



DEADLINE: Forms are due August 16th and will be processed on a first come first served basis until all spaces are filled. Forms may be scanned and emailed to jhamano@moanalupto.org. Tuition may be submitted at the first class on August 23rd. Please do not submit forms or payment to the school office.

Forms are available at: <http://www.moanalupto.org/orchestra/>

COST: \$250 tuition for the Fall session. This includes instruction, performances, materials, and an instrument to use for the length of the course. Please make checks payable to Jeff Hamano.

CONTACT: Mr. Hamano → jhamano@moanalupto.org
